



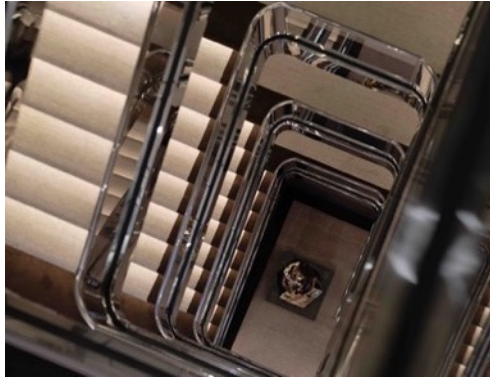
THE RITZ - CARLTON  
YACHT COLLECTION

# INTRODUCING THE YACHT EXPERIENCE

FEBRUARY 2024



# EVIRIMA – NOW SAILING





# EV RIMA BY THE NUMBERS



624  
FEET  
(190 METERS)

25,400  
TONS

149  
SUITES

298  
GUESTS

246  
CREW

1 to 1.21  
CREW-TO-GUEST  
RATIO

1 to 85.2  
GUEST-TO-SPACE  
RATIO

# BRAND VALUE



THE RITZ-CARLTON

The Ritz-Carlton inspires life's most meaningful journeys.

- AWARD-WINNING LUXURY HOTEL BRAND
- STRONG BRAND RECOGNITION GLOBALLY
- HOSPITALITY AT A GOLD STANDARD
- LEGENDARY PERSONALIZED SERVICE



# SERVICE



## SERVICE AT A GOLD STANDARD

Legendary service is provided by the Ladies and Gentlemen of The Ritz-Carlton, with almost one crew member for every guest.

- WARM
- SINCERE
- PERSONALIZED
- ANTICIPATORY

# THE ALL-INCLUSIVE EXPERIENCE



- LUXURY ALL-SUITE ACCOMMODATIONS, EACH WITH PRIVATE TERRACE
- MULTIPLE DINING EXPERIENCES, INCLUDING 24-HOUR IN-SUITE DINING
- MARINA PLATFORM WITH ACCESS TO NON-MOTORIZED WATER SPORTS WHILE AT ANCHOR
- BEVERAGES IN-SUITE AND THROUGHOUT THE YACHT
- ONBOARD ACTIVITIES AND ENTERTAINMENT
- ONBOARD GRATUITIES
- WI-FI THROUGHOUT THE YACHT



# THE EXPERIENCE

Designed to combine the luxury lifestyle of The Ritz-Carlton with the casual freedom of a yachting vacation, The Ritz-Carlton Yacht Collection offers itineraries at a relaxed pace and introduce guests to the local cultures of each destination through curated immersive experiences ashore.

ALL-INCLUSIVE VALUE

PERSONALIZED SERVICE OF  
THE RITZ-CARLTON®

MULTIPLE DINING  
EXPERIENCES, 24-HOUR IN-  
SUITE DINING, PLUS  
SPECIALTY DINING

ALL-SUITE  
ACCOMMODATIONS, EACH  
WITH PRIVATE TERRACE

UNIQUE MARINA-STYLE  
PLATFORM, DIRECT ACCESS  
TO WATER

VARIETY OF SOCIAL SPACES  
FOR RECEPTIONS &  
ENTERTAINMENT

RELAXED YACHTING PACE,  
OVERNIGHTS & DAYTIME  
PORTS OF CALL

CURATED, IMMERSIVE  
DESTINATION EXPERIENCES  
ASHORE

# THE DINING EXPERIENCE

ABOARD EVRIMA



# EVIRIMA DINING EXPERIENCES

INCLUDED

OPEN SEATING

MISTRAL

TALAAAT NAM

THE POOL HOUSE

THE EVRIMA ROOM

*\*Reservations encouraged once on board*



LIGHT BITES

THE BAR

THE LIVING ROOM

THE MARINA TERRACE

24-HOUR IN-SUITE DINING



ADDITIONAL FEE

SPECIALTY\*

S.E.A.

DINING PRIVÉE

*\*Reservations required*



MISTRAL  
MEDITERRANEAN INSPIRED  
DECK 8







THE POOL HOUSE  
CASUAL VARIETY  
DECK 5





THE EVRIMA ROOM  
LOCALLY INSPIRED  
DECK 4











S.I.A.

TELECOM



THE LIVING ROOM  
COFFEES AND PASTRIES  
DECK 4





THE MARINA TERRACE  
COCKTAILS AND LIGHT BITES  
DECK 3





S.E.A.  
SPECIALTY DINING  
DECK 6





24-HOUR IN-SUITE DINING





# EVIRIMA DINING EXPERIENCES

INCLUDED

OPEN SEATING

MISTRAL

TALAAAT NAM

THE POOL HOUSE

THE EVRIMA ROOM

*\*Reservations encouraged once on board*



LIGHT BITES

THE BAR

THE LIVING ROOM

THE MARINA TERRACE

24-HOUR IN-SUITE DINING



ADDITIONAL FEE

SPECIALTY\*

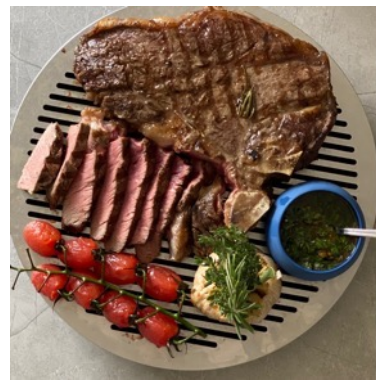
S.E.A.

DINING PRIVÉE

*\*Reservations required*



# SAMPLE MENU ITEMS





# SAMPLE MENU ITEMS





# THE SUITE EXPERIENCE

# SUITE AMENITIES AND FEATURES

Wake up every morning relaxed and carefree in one of our 149 expertly appointed suites. Designed to combine the modern elegance of The Ritz-Carlton with the casual luxury of the world's most magnificent super yachts, our suites set a new standard for luxury travel.

PRIVATE OCEAN-VIEW  
TERRACE

DOUBLE VANITY  
BATHROOMS

ESPRESSO MACHINE  
WITH COMPLIMENTARY  
COFFEES AND TEAS

24-HOUR IN-SUITE  
DINING

COMPLIMENTARY WI-FI

LUXURIOUS CUSTOM  
KING BED SYSTEM AND  
LINENS

MINI-BAR PROVISIONED  
TO GUESTS'  
PREFERENCES

COMPLIMENTARY  
BOTTLE OF CHAMPAGNE  
UPON ARRIVAL

INDIVIDUAL ROBE AND  
SLIPPERS

ACCESS TO A SUITE  
AMBASSADOR IN ALL  
SUITE CATEGORIES



# EVIRIMA'S SUITES

- 149 SUITES, EACH WITH PRIVATE OCEAN-VIEW TERRACE
- HIGHEST PERCENTAGE OF LARGER SUITES IN LUXURY CRUISING
- TWO OWNER'S SUITES, EACH WITH PRIVATE WHIRLPOOL
- LOFTS AND COMBINABLE SUITES WITH FLEXIBLE CONFIGURATION
- SUPERIOR GUEST AMENITIES



# EXEMPLARY PERSONALIZED SERVICE



All suites include access to a Suite Ambassador, standing by to ensure every detail of the voyage is considered, from dinner reservations to organizing destination experiences. The Suite Ambassador is the onboard touchpoint to ensure a seamless journey from start to finish.

The onboard Concierge will be the ultimate insider on board for guests, providing recommendations and insight, tailoring their voyage specifically to them.



# SUITE AMENITIES

diptyque  
paris

Luxury bath amenities, including shampoo, conditioner, body wash and body lotion from Diptyque



400 thread count sateen linens and throw blanket from the Hotel Collection by Frette



Complimentary chilled bottle of Moët et Chandon champagne upon arrival



Pop-up vanity mirror in suite



Hair dryer and flat iron from Harry Josh



Espresso machine with complimentary Illy coffee and Dammann teas

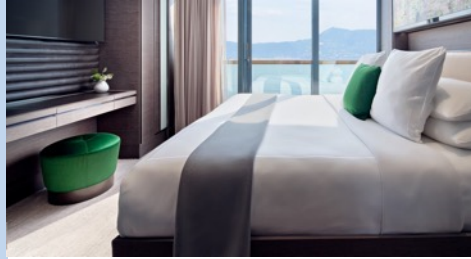
# EVIRIMA SUITES AT A GLANCE

THE OWNER'S SUITE



SUITE: 1091 SQ FT | 101 SQ M  
TERRACE: 635 SQ FT | 59 SQ M  
QUANTITY: 2

THE VIEW SUITE



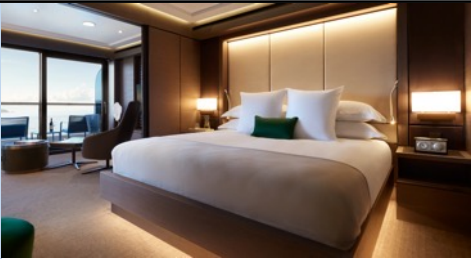
SUITE: UP TO 574 SQ FT | 53 SQ M  
TERRACE: UP TO 129 SQ FT | 12 SQ M  
QUANTITY: 4

THE LOFT SUITE



SUITE: 611 SQ FT | 57 SQ M  
TERRACE: 81 SQ FT | 7.5 SQ M  
QUANTITY: 12

THE GRAND SUITE



SUITE: 587 SQ FT | 55 SQ M  
TERRACE: UP TO 118 SQ FT | 11 SQ M  
QUANTITY: 14

THE SIGNATURE SUITE



SUITE: 429 SQ FT | 40 SQ M  
TERRACE: UP TO 118 SQ FT | 11 SQ M  
QUANTITY: 27

THE TERRACE SUITE

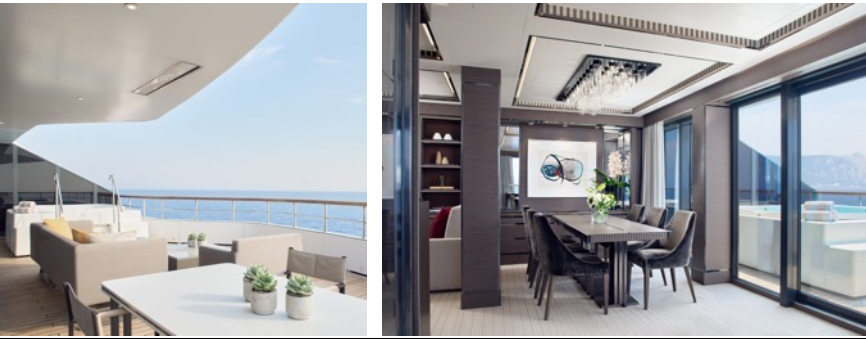


SUITE: 300 SQ FT | 28 SQ M  
TERRACE: UP TO 81 SQ FT | 7.5 SQ M  
QUANTITY: 90



# THE OWNER'S SUITE

QUANTITY: 2  
SUITE: 1091 SQ FT | 101 SQ M  
TERRACE: 635 SQ FT | 59 SQ M



# THE VIEW SUITE

QUANTITY: 4  
SUITE: UP TO 574 SQ FT | 53 SQ M  
TERRACE: UP TO 129 SQ FT | 12 SQ M





# THE LOFT SUITE

QUANTITY: 12  
SUITE: 611 SQ FT | 57 SQ M  
TERRACE: 81 SQ FT | 7.5 SQ M



# THE GRAND SUITE

QUANTITY: 14  
SUITE: 587 SQ FT | 55 SQ M  
TERRACE 108-118 SQ FT | 10-11 SQ M





# THE SIGNATURE SUITE

QUANTITY: 27  
SUITE: 429 SQ FT | 40 SQ M  
TERRACE: 81-118 SQ FT | 7.5-11 SQ M



# THE TERRACE SUITE

QUANTITY: 90  
SUITE: 300 SQ FT | 28 SQ M  
TERRACE: 54-81 SQ FT | 5-7.5 SQ M



# CONNECTING AND CONVERTIBLE SUITES

All suites are designed for two (2) guests, but many can be connected to satisfy the needs of families or to appeal to meeting planners. An innovative system offers the flexibility to transform connecting suites into larger spaces by removing a panel of the wall.

All connecting suites include:

- An expanded private terrace
- Two (2) luxury custom king bed sleep systems
- Two (2) in-suite safes
- Two (2) double vanity bathrooms, each with a modern shower system
- Three (3) digital flat screen televisions
  - Two (2) in Terrace-to-Terrace configurations

Terrace-to-Grand (connected)



Terrace-to-Signature (convertible)



Terrace-to-Terrace (convertible)





# CONNECTING AND CONVERTIBLE SUITES

## INNOVATIVE WALL SYSTEM

Flexible configuration options allow connecting suites to expand to satisfy the needs of families to appeal to meeting planners seeking to provide similar accommodations for their top performers.

The opening measures 7.2 feet wide by 7.2 feet high (2.2 meters wide by 2.2 meters high).

## CONNECTING SUITES

Of the 149 suites on board, the connecting suites total 43 single-suite configurations. If all connecting suites are utilized as single-suite configurations, inventory reduces to 106 suites.

Select Terrace Suites (18 total) are convertible suites that can be configured as an extended living and dining area or remain a second bedroom when connected to the adjacent suite.

Three (3) combinations of suite categories are available for connecting suites:

Terrace-to-Terrace: 24 total (12 Convertible)

Terrace-to-Signature: 7 total (Three (3) Convertible)

Terrace-to-Grand: 12 total (Three (3) Convertible)

# CONNECTING TERRACE SUITES

SUITE: 600 SQ FT | 56 SQ M  
TERRACE: UP TO 162 SQ FT | 15 SQ M



# LIFE ON BOARD

ACTIVITIES AND PUBLIC SPACES



# THE MARINA

MULTI-FUNCTIONAL PLATFORM

DIRECT ACCESS TO THE WATER FROM DECK 3

COMPLIMENTARY WATERSPORTS DURING  
PORT DAYS WHILE AT ANCHOR\*

- PADDLEBOARDS
- WINDSURF BOARDS
- KAYAKS
- SAILBOATS
- SNORKELING ACCESSORIES

*\*Weather and local authorities permitting*









THE RITZ-CARLTON  
YACHT COLLECTION





# THE MARINA ACTIVITIES



90-minute private or semi-private lessons in sailing or windsurfing\*

\*available at an additional cost



Aquatic fitness classes:

Land and Sea: Strength and stability using standup paddle boards, stability balls, bans and kettlebells

Paddleboard Fitness: Core conditioning and body weight exercises

Stretching at Sea



Orientations for water sports equipment:

Sailing 101

Kayaking 101

Snorkeling 101 (where available)

Paddleboarding 101







# PUBLIC SPACES ON BOARD EVRIMA



- INTIMATE, RELAXED, CASUALLY ELEGANT ATMOSPHERE
- INTUITIVE, RESIDENTIAL FEEL
- LOUNGE AND BAR OFFER A VARIETY OF ENTERTAINMENT EXPERIENCES
- ACTIVELY SOCIALIZE OR ENJOY PRIVACY
- PEACEFUL RETREAT BY DAY, SOCIAL SCENE BY NIGHT





















BADE WATCHES

BADE WATCHES

MACALLAN

SHIRAZ V.V.O  
1998  
THE HUMIDOR



# THE HUMIDOR

- Partnership with Davidoff to offer a wide assortment of world-class cigars including
  - Aniversario Series
  - Signature Series
  - Escurio Series
  - Winston Churchill Series
  - Oro Blanco Series
- Cocktails and spirits to pair with cigars, with Premium Reserve offerings available for an additional cost, including
  - Pappy Van Winkle
  - Rémy Martin Louis XII
  - Johnny Walker Blue Label
- History of Cigars educational event provides a sneak peak into the world of cigar making



# SPA & WELLNESS

THE RITZ-CARLTON SPA® AND  
FITNESS CENTER



# SPA AND WELLNESS

- SPA DESIGNED AND OPERATED BY THE RITZ-CARLTON®
- INDOOR AND OUTDOOR TREATMENT ROOMS AND RELAXATION AREAS
- BEAUTY LOUNGE AND GENTLEMEN'S GROOMING SALON
  
- TECHNOGYM EQUIPMENT
- GROUP EXERCISE CLASSES
- PERSONAL TRAINING
- FITNESS ON DEMAND



# THE RITZ-CARLTON SPA OFFERINGS

Guests can escape to their own personal oasis at The Ritz-Carlton Spa to indulge in the scents and delights from around the world while enjoying a relaxing massage or a nourishing facial featuring products from 111SKIN and ESPA.

- Massages
- Facials (for both ladies and gentlemen)
- Skin Treatments
- Salon Services
- Barber Services



  
THE RITZ-CARLTON  
YACHT COLLECTION

An indulgence or a necessity,  
a treatise of sensation or self-care,  
an awakening or an escape, the Spa  
experience signifies something  
different for everyone. The Spa  
experience aboard The Ritz-Carlton  
Yacht Collection invites you to indulge  
in scents and delights from around the  
world. Inspired by the destinations we  
visit and carried by the destinations we  
visit, our treatments soothe the senses,  
refresh the body and renew the spirit.  
Alike only, this is make and drift away  
in relaxation aboard your seas at sea.

SPA

# SPA TREATMENTS



60- or 90-minute calming or deep-muscle massage, featuring a selection of aromatherapy oils, hot stones and enhancements designed by ESPA and 111SKIN.



Skin-nourishing treatments, including leg masques, exfoliating body scrubs and facials to hydrate and reinvigorate



Manicure and pedicure services performed with 111SKIN products paired with face masks to leave the skin and cuticles smooth and nourished



Salon services for men and women, including a clean shave or a hair cut and style



# FITNESS STUDIO OFFERINGS

In addition to the spa, the onboard Fitness Studio is home to a health and wellness program integrating fitness and spa with lectures and nutrition that can be customized to fit guests' needs.

## FITNESS STUDIO OFFERINGS:

- Personal Training
- Group Exercise Classes
- Private or Group Yoga Classes
- Fitness on Demand Access













THE SPA TERRACE

DECK 9

















# RITZ KIDS

- DEDICATED SPACE ON BOARD FOR CHILDREN AGES 4 TO 12
- ENHANCED SERVICES AVAILABLE DURING HOLIDAYS AND SUMMER MONTHS

MORNING SESSION: 9:00 AM – 12:00 PM \$45

AFTERNOON SESSION: 1:00 PM – 4:00 PM \$45

EVENING SESSION: 6:00 PM – 9:00P M \$65



# RITZ KIDS PROGRAMMING



The Ritz Kids program is geared toward children from ages 4 to 12. Four key pillars are designed to inspire natural curiosity and creativity and to engage their senses.

**OCEANS & MARINE LIFE:** Examining our relationship with water and marine life while enlivening a natural curiosity into the underwater world of sea creatures

Sample activities: Water Cycle Craft, Create a Creature

**DESTINATIONS AND THEIR CULTURES:** Celebrating the cultures from around the world through art, music, theatre and play

Sample activities: Culture and Clay, Mystery Detective

**OCEAN STEWARDSHIP AND SAILING:** Shining a light on traditional and modern sailing practices including navigation, marine communication and ship stability

Sample activities: Destination Navigation Chart, Ropes and Knots

**ENVIRONMENTAL RESPONSIBILITY:** Promoting our role in the health of our planet for the future including sustainability, resource consumption and protecting our ecosystem

Sample activities: Water Sampling Science Experiment, Yacht Sustainability Systems

# SPECIAL OCCASION PACKAGES

## **WEDDINGS AND VOW RENEWALS - \$900 PER COUPLE / \$450 PER GUEST**

Our Wedding and Vow Renewal package allows guests to celebrate their special day with loved ones while onboard, with a ceremony officiated by the captain\* and pre- and post- ceremony reception and toast.

This package includes lunch or dinner at our Michelin-inspired specialty restaurant or in our Dining Privéé, bouquets and boutonnieres for the bridal party, live music and a personalized cake.

## **CELEBRATIONS - \$950 PER COUPLE**

Couples traveling with us who are celebrating a special occasion such as an anniversary or honeymoon may purchase our Celebrations package which includes a bottle of champagne, special turndown amenities, a couple's massage at the onboard spa, and their choice of Epicurean Experience from The Shore Collection.

Packages can be booked 134 days prior to sailing.

For more information, please email [special.services@ritz-carltonyachtcollection.com](mailto:special.services@ritz-carltonyachtcollection.com)

\*The Ritz-Carlton Yacht Collection does not perform legally binding ceremonies on board.  
It is recommended for couples to hold a civil ceremony to ensure they meet local marriage law requirements.





# ENTERTAINMENT AND ENRICHMENT



Led by the Entertainment & Enrichment Director, onboard entertainment staff features an in-house quartet comprised of one pianist, one vocalist, one guitarist and one drum/sax musician.



A global network of world-renowned entertainers and enrichment artists joins the yacht for specific sailings to suit the regions we visit.

Our detailed activities program features elements such as classic movies, themed dinners with curated entertainment and lectures.



A partnership with Enterprise & Art creates an immersive art program and curate a permanent collection of art showcased throughout the yacht.

Limited print editions and unique are available for purchase.



The onboard Arts Concierge will oversee the Art Program experience and provide regular educational talks on art history, curation and the stories behind each piece.

# EVENTS AND ACTIVITIES

## THEMED EVENINGS AND PARTIES

- En Blanc Party
- Havana Nights
- Disco Night

AFTERNOON TEA in The Living Room

FLOWER WORKSHOP with our onboard florist

RUM TASTING on The Observation Terrace

Exclusive BEACHSIDE BBQ



# ITINERARIES



# RELAXED PACE



- MORE OVERNIGHTS IN PORTS OF CALL
- MOST VOYAGES RANGE 7-10 NIGHTS
- ABILITY TO COMBINE BACK-TO-BACK VOYAGES WITHOUT REPEATING PORTS
- INTIMATE SIZE ALLOWS ACCESS TO COVETED YACHTING DESTINATIONS

# SHORE EXCURSIONS

Curated experiences expertly designed to ensure each moment ashore is uniquely rewarding, promising peace of mind and a sense of purpose in every excursion

## SELECT GROUP EXCURSIONS

Small groups guided by a local expert for a unique immersion into the destination

## PRE-DESIGNED PRIVATE EXCURSIONS

Unique experience with a dedicated guide for a flexible and personalized excursion catered to the guests' wishes and needs

## CUSTOM PRIVATE EXCURSIONS

Unique itinerary designed to guests' personal preferences



# 2023-2025 SEASONS

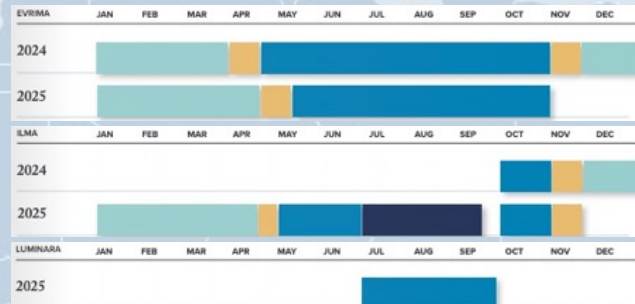


**CARIBBEAN & CENTRAL AMERICA**

**TRANSATLANTIC**

**NORTHERN EUROPE**

**MEDITERRANEAN**





# 2024 VOYAGE CALENDAR

## CARIBBEAN

DATE	NIGHTS	ITINERARY	YACHT
FEB 9	8	SAN JUAN ROUNDTrip	EV RIMA
FEB 17	7	SAN JUAN TO BARBADOS	EV RIMA
FEB 24	7	BARBADOS ROUNDTrip	EV RIMA
MAR 2	5	BARBADOS TO SAN JUAN	EV RIMA
MAR 7	4	SAN JUAN ROUNDTrip	EV RIMA
MAR 11	5	SAN JUAN ROUNDTrip	EV RIMA
MAR 16	7	SAN JUAN ROUNDTrip	EV RIMA
MAR 28	7	SAN JUAN TO BERMUDA	EV RIMA

NOV 14	6	BARBADOS ROUNDTrip	EV RIMA
NOV 14	6	SAN JUAN ROUNDTrip	ILMA
NOV 20	7	BARBADOS ROUNDTrip	EV RIMA
NOV 20	7	SAN JUAN TO FORT LAUDERDALE	ILMA
NOV 27	8	BARBADOS TO ARUBA	EV RIMA
NOV 27	9	FORT LAUDERDALE ROUNDTrip	ILMA
DEC 5	8	ARUBA ROUNDTrip	EV RIMA
DEC 6	5	FORT LAUDERDALE ROUNDTrip	ILMA
DEC 11	9	FORT LAUDERDALE ROUNDTrip	ILMA
DEC 13	7	ARUBA TO SAN JUAN	EV RIMA
DEC 20	8	FORT LAUDERDALE TO SAN JUAN	ILMA
DEC 20	7	SAN JUAN ROUNDTrip	EV RIMA
DEC 27	7	SAN JUAN ROUNDTrip	EV RIMA
DEC 28	7	SAN JUAN ROUNDTrip	ILMA

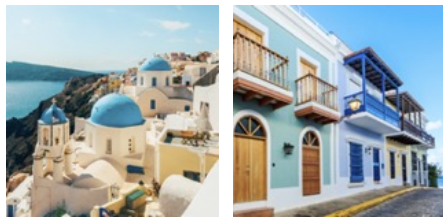
## MEDITERRANEAN

DATE	NIGHTS	ITINERARY	YACHT
APR 15	11	LISBON TO BARCELONA	EV RIMA
APR 26	11	BARCELONA TO ROME	EV RIMA
MAY 7	10	ROME TO VALLETTA	EV RIMA
MAY 17	5	VALLETTA TO NICE	EV RIMA
MAY 28	7	ROME ROUNDTrip	EV RIMA
JUN 4	5	ROME TO VALLETTA	EV RIMA
JUNE 9	10	VALLETTA TO ATHENS	EV RIMA
JUN 19	11	ATHENS TO VENICE	EV RIMA
JUN 30	7	VENICE ROUNDTrip	EV RIMA
JUL 7	7	VENICE TO ATHENS	EV RIMA
JUL 14	7	ATHENS ROUNDTrip	EV RIMA
JUL 21	7	ATHENS TO VENICE	EV RIMA
JUL 28	10	VENICE TO ROME	EV RIMA

AUG 7	7	ROME TO NICE	EV RIMA
AUG 14	7	NICE TO ROME	EV RIMA
AUG 26	5	VALLETTA TO ROME	EV RIMA
AUG 31	7	ROME TO VALLETTA	EV RIMA
SEP 2	7	MONTE CARLO TO ROME	ILMA
SEP 7	8	VALLETTA TO ATHENS	EV RIMA
SEP 9	10	ROME TO ATHENS	ILMA
SEP 15	5	ATHENS ROUNDTrip	EV RIMA
SEP 19	7	ATHENS ROUNDTrip	ILMA
SEP 20	11	ATHENS ROUNDTrip	EV RIMA
SEP 26	12	ATHENS TO ROME	ILMA
OCT 1	9	ATHENS TO VALLETTA	EV RIMA
OCT 8	7	ROME ROUNDTrip	ILMA
OCT 10	7	VALLETTA TO NICE	EV RIMA
OCT 15	7	ROME TO BARCELONA	ILMA
OCT 17	7	NICE TO BARCELONA	EV RIMA
OCT 22	10	BARCELONA TO LISBON	ILMA
OCT 24	10	BARCELONA TO TENERIFE	EV RIMA

## TRANSATLANTIC

DATE	NIGHTS	ITINERARY	YACHT
APR 4	11	BERMUDA TO LISBON	EV RIMA
NOV 1	13	LISBON TO SAN JUAN	ILMA
NOV 3	11	TENERIFE TO BARBADOS	EV RIMA



# 2025 VOYAGE CALENDAR

## CARIBBEAN

DATE	NIGHTS	ITINERARY	YACHT
JAN 3	5	SAN JUAN ROUNDTRIP	EVIRIMA
JAN 4	7	SAN JUAN ROUNDTRIP	ILMA
JAN 8	7	SAN JUAN TO BARBADOS	EVIRIMA
JAN 11	7	SAN JUAN ROUNDTRIP	ILMA
JAN 15	7	BARBADOS ROUNDTRIP	EVIRIMA
JAN 18	7	SAN JUAN TO BARBADOS	ILMA
JAN 22	6	BARBADOS TO SAN JUAN	EVIRIMA
JAN 25	8	BARBADOS ROUNDTRIP	ILMA
FEB 2	6	BARBADOS TO SAN JUAN	ILMA
FEB 2	7	SAN JUAN TO BARBADOS	EVIRIMA
FEB 8	8	SAN JUAN ROUNDTRIP	ILMA
FEB 9	7	BARBADOS ROUNDTRIP	EVIRIMA

FEB 16	5	BARBADOS ROUNDTRIP	EVIRIMA
FEB 21	7	BARBADOS TO SAN JUAN	EVIRIMA
MAR 1	7	SAN JUAN TO BARBADOS	ILMA
MAR 8	6	BARBADOS ROUNDTRIP	ILMA
MAR 14	7	BARBADOS ROUNDTRIP	ILMA
MAR 15	7	SAN JUAN ROUNDTRIP	EVIRIMA
MAR 21	7	BARBADOS TO SAN JUAN	ILMA
MAR 22	5	SAN JUAN ROUNDTRIP	EVIRIMA
MAR 27	6	SAN JUAN ROUNDTRIP	EVIRIMA
MAR 28	7	SAN JUAN TO FORT LAUDERDALE	ILMA
APR 9	5	FORT LAUDERDALE ROUNDTRIP	ILMA

## TRANSATLANTIC

DATE	NIGHTS	ITINERARY	YACHT
APR 14	12	FORT LAUDERDALE TO LISBON	ILMA
APR 12	12	SAN JUAN TO LISBON	EVIRIMA
OCT 25	13	LISBON TO FORT LAUDERDALE	ILMA
OCT 31	13	LISBON TO SAN JUAN	EVIRIMA



# 2025 VOYAGE CALENDAR

## MEDITERRANEAN

DATE	NIGHTS	ITINERARY	YACHT
APR 24	10	LISBON TO BARCELONA	EVIRIMA
APR 27	7	LISBON TO BARCELONA	ILMA
MAY 4	7	BARCELONA ROUNDTRIP	EVIRIMA
MAY 18	7	ATHENS TO ISTANBUL	ILMA
MAY 25	7	ISTANBUL TO ATHENS	ILMA
MAY 27	9	ROME TO VENICE	EVIRIMA
JUN 1	7	ATHENS ROUNDTRIP	ILMA
JUN 5	7	VENICE ROUNDTRIP	EVIRIMA
JUN 6	9	ATHENS TO ROME	ILMA
JUN 12	8	VENICE TO ATHENS	EVIRIMA
JUN 15	7	ROME TO BARCELONA	ILMA
JUN 20	7	ATHENS ROUNDTRIP	EVIRIMA
JUN 22	7	BARCELONA TO LISBON	ILMA
JUN 27	9	ATHENS ROUNDTRIP	EVIRIMA

JUL 6	7	ATHENS ROUNDTRIP	EVIRIMA
JUL 13	6	ATHENS TO VENICE	EVIRIMA
JUL 17	7	ATHENS TO VENICE	EVIRIMA
JUL 20	7	VENICE TO ROME	EVIRIMA
JUL 27	7	ROME TO MONTE CARLO	EVIRIMA
JUL 31	7	ROME ROUNDTRIP	LUMINARA
AUG 7	7	ROME ROUNDTRIP	LUMINARA
AUG 10	7	ROME ROUNDTRIP	EVIRIMA
AUG 14	7	ROME TO BARCELONA	LUMINARA
AUG 17	7	ROME TO ATHENS	EVIRIMA
AUG 21	7	BARCELONA ROUNDTRIP	LUMINARA
AUG 24	7	ATHENS ROUNDTRIP	EVIRIMA
AUG 28	7	BARCELONA TO ROME	LUMINARA
AUG 31	8	ATHENS TO NICE	EVIRIMA
SEP 4	7	ROME TO ATHENS	LUMINARA
SEP 11	7	ATHENS ROUNDTRIP	LUMINARA
SEP 13	7	ROME TO VENICE	EVIRIMA

SEP 24	7	VENICE ROUNDTRIP	EVIRIMA
SEP 27	7	BARCELONA TO ROME	ILMA
OCT 4	7	ROME ROUNDTRIP	ILMA
OCT 11	7	ROME TO BARCELONA	ILMA
OCT 18	7	MONTE CARLO TO BARCELONA	EVIRIMA
OCT 18	7	BARCELONA TO LISBON	ILMA
OCT 25	8	BARCELONA TO LISBON	EVIRIMA

## NORTHERN EUROPE

DATE	NIGHTS	ITINERARY	YACHT
JUN 29	9	LISBON TO PORTSMOUTH	ILMA
JUL 8	9	PORTSMOUTH TO AMSTERDAM	ILMA
JUL 17	7	AMSTERDAM TO COPENHAGEN	ILMA
JUL 24	7	COPENHAGEN TO STOCKHOLM	ILMA
JUL 31	7	STOCKHOLM TO OSLO	ILMA
AUG 7	10	OSLO TO REYKJAVIK	ILMA
AUG 17	7	REYKJAVIK ROUNDTRIP	ILMA
AUG 24	11	REYKJAVIK TO AMSTERDAM	ILMA
SEP 4	9	AMSTERDAM TO LISBON	ILMA





# INTRODUCING ILMA

# INTRODUCING OUR NEWEST SUPERYACHTS

- Two new superyachts, *Ilma* and *Luminara*, slated to set sail in 2024 and 2025 respectively.
- Signature spaces:
  - Multiple dining experiences
  - Wine vault
  - The Ritz-Carlton Spa®
  - Expanded marina with access to the sea
- Higher percentage of upper suites
- Reservations for *Ilma* now open



# ILMA BY THE NUMBERS



790  
FEET  
(241 METERS)

46,750  
TONS

224  
SUITES

448  
GUESTS

374  
CREW

1 to 1.2  
CREW-TO-GUEST  
RATIO

1 to 104.4  
GUEST-TO-SPACE  
RATIO



# ILMA'S SUITES

- 224 SUITES, EACH WITH PRIVATE OCEAN-VIEW TERRACE
- TWO NEW UPPER SUITE CATEGORIES
- SUPERIOR GUEST AMENITIES



# ILMA SUITES AT A GLANCE

THE OWNER'S SUITE



SUITE: 732-1033 SQ FT | 68-96 SQ M  
TERRACE: 581-721 SQ FT | 54-67 SQ M  
QUANTITY: 8

THE CONCIERGE SUITE



SUITE: 689-785 SQ FT | 64-73 SQ M  
TERRACE: 355-409 SQ FT | 33-38 SQ M  
QUANTITY: 4

THE ILMA SUITE



SUITE: 506-657 SQ FT | 47-61 SQ M  
TERRACE: 291-301 SQ FT | 27-28 SQ M  
QUANTITY: 4

THE VIEW SUITE



SUITE: 517-689 SQ FT | 48-64 SQ M  
TERRACE: 108-205 SQ FT | 10-19 SQ M  
QUANTITY: 2

THE GRAND SUITE



SUITE: 560 SQ FT | 52 SQ M  
TERRACE: 90-199 SQ FT | 8.4-18.5 SQ M  
QUANTITY: 32

THE SIGNATURE SUITE



SUITE: 409 SQ FT | 38 SQ M  
TERRACE: 71-151 SQ FT | 6.6-14 SQ M  
QUANTITY: 77

THE TERRACE SUITE



SUITE: 294-452 SQ FT | 27.3-42 SQ M  
TERRACE: 52-161 SQ FT | 4.8-15 SQ M  
QUANTITY: 92 (+5 ADA)

# THE OWNER'S SUITE

SUITE: 732-1033 SQ FT | 68-96 SQ M  
TERRACE: 581-721 SQ FT | 54-67 SQ M  
QUANTITY: 8





# THE CONCIERGE SUITE

SUITE: 689-785 SQ FT | 64-73 SQ M  
TERRACE: 355-409 SQ FT | 33-38 SQ M  
QUANTITY: 4



# THE ILMA SUITE

SUITE: 506-657 SQ. FT | 47-61 SQ. M  
TERRACE: 291-301 SQ. FT | 27-28 SQ. M  
QUANTITY: 4



# THE VIEW SUITE

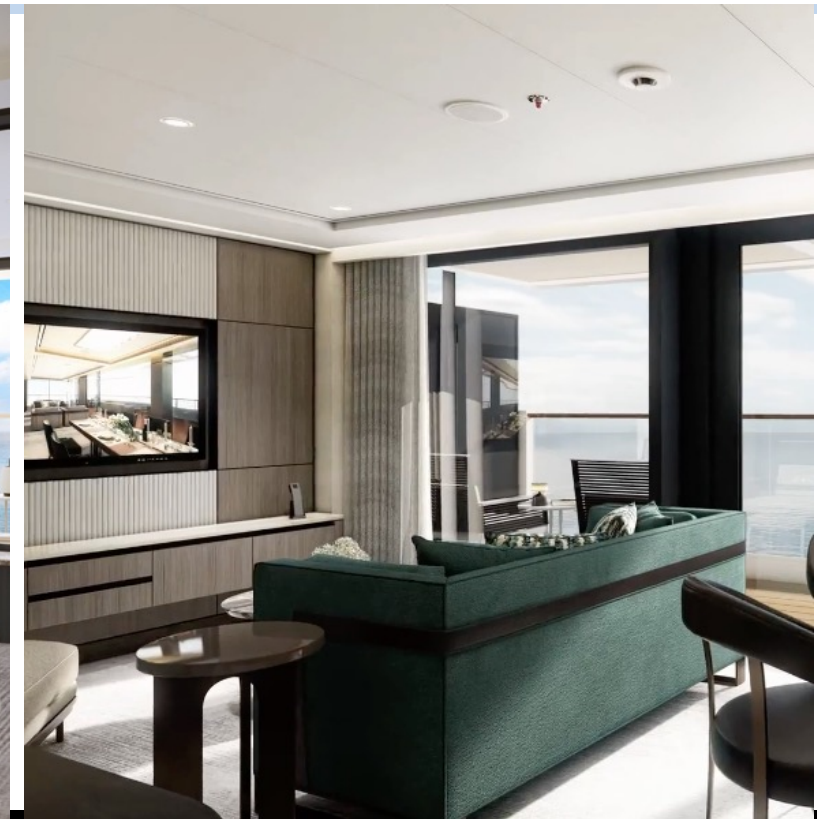
SUITE: 517-689 SQ FT | 48-64 SQ M  
TERRACE: 108-205 SQ FT | 10-19 SQ M  
QUANTITY: 2





# THE GRAND SUITE

SUITE: 560 SQ FT | 52 SQ M  
TERRACE: 90-199 SQ FT | 8.4-18.5 SQ M  
QUANTITY: 32



# THE SIGNATURE SUITE

SUITE: 409 SQ FT | 38 SQ M  
TERRACE: 71-151 SQ FT | 6.6-14 SQ M  
QUANTITY: 77



# THE TERRACE SUITE

SUITE: 294-452 SQ FT | 27.3-42 SQ M  
TERRACE: 52-161 SQ FT | 4.8-15 SQ M  
QUANTITY: 92 (+5 ADA)





# THE MARINA – DECK 3



# THE MARINA TERRACE – DECK 3





# TIDES- DECK 3





# SETA (SPECIALTY DINING)– DECK 3



# DINING PRIVÉE – DECK 3





# MEMORĪ- DECK 4





# THE RITZ-CARLTON SPA – DECK 4



# THE RITZ-CARLTON SPA – DECK 4



# THE SALON – DECK 4





# RETAIL – DECK 5



# BEACH HOUSE – DECK 5





# THE LIVING ROOM- DECK 5





# MISTRAL – DECK 10



# THE POOL – DECK 10





# THE SUN DECK – DECK 10





# AFT & FWD STAIRS



THE RITZ-CARLTON YACHT COLLECTION

# INTRODUCING LUMINARA



790  
FEET  
(241 METERS)

46,750  
TONS

226  
SUITES

452  
GUESTS

374  
CREW

1 to 1.2  
CREW-TO-GUEST  
RATIO

1 to 104.4  
GUEST-TO-SPACE  
RATIO



# LUMINARA SUITES AT A GLANCE

THE OWNER'S SUITE



SUITE: 732-1033 SQ FT | 68-96 SQ M  
TERRACE: 581-700 SQ FT | 54-65 SQ M  
QUANTITY: 8

THE CONCIERGE SUITE



SUITE: 689-785 SQ FT | 64-73 SQ M  
TERRACE: 355-409 SQ FT | 33-38 SQ M  
QUANTITY: 4

THE RESIDENTIAL SUITE



SUITE: 833 SQ FT | 82 SQ M  
TERRACE: 156 SQ FT | 14.5 SQ M  
QUANTITY: 2

THE LUMINARA SUITE



SUITE: 506-657 SQ FT | 47-61 SQ M  
TERRACE: 291-301 SQ FT | 27-28 SQ M  
QUANTITY: 4

THE VIEW SUITE



SUITE: 517-689 SQ FT | 48-64 SQ M  
TERRACE: 108-205 SQ FT | 10-19 SQ M  
QUANTITY: 2

THE GRAND SUITE



SUITE: 560 SQ FT | 52 SQ M  
TERRACE: 90-199 SQ FT | 8.4-18.5 SQ M  
QUANTITY: 37

THE SIGNATURE SUITE



SUITE: 409 SQ FT | 38 SQ M  
TERRACE: 71-151 SQ FT | 6.6-14 SQ M  
QUANTITY: 81

THE TERRACE SUITE



SUITE: 294-452 SQ FT | 27.3-42 SQ M  
TERRACE: 52-161 SQ FT | 4.8-15 SQ M  
QUANTITY: 83 (+5 ADA)



# THE OWNER'S SUITE

SUITE: 732-1033 SQ FT | 68-96 SQ M  
TERRACE: 581-700 SQ FT | 54-65 SQ M  
QUANTITY: 8



# THE CONCIERGE SUITE

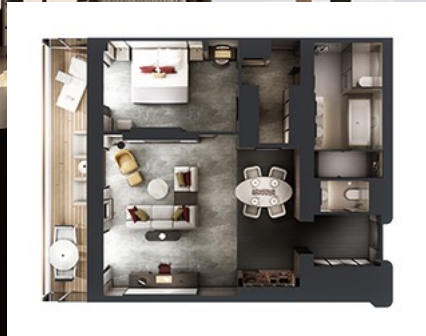
SUITE: 689-786 SQ FT | 64-73 SQ M  
TERRACE: 355-409 SQ FT | 33-38 SQ M  
QUANTITY: 4



THE RITZ-CARLTON YACHT COLLECTION

# THE RESIDENTIAL SUITE

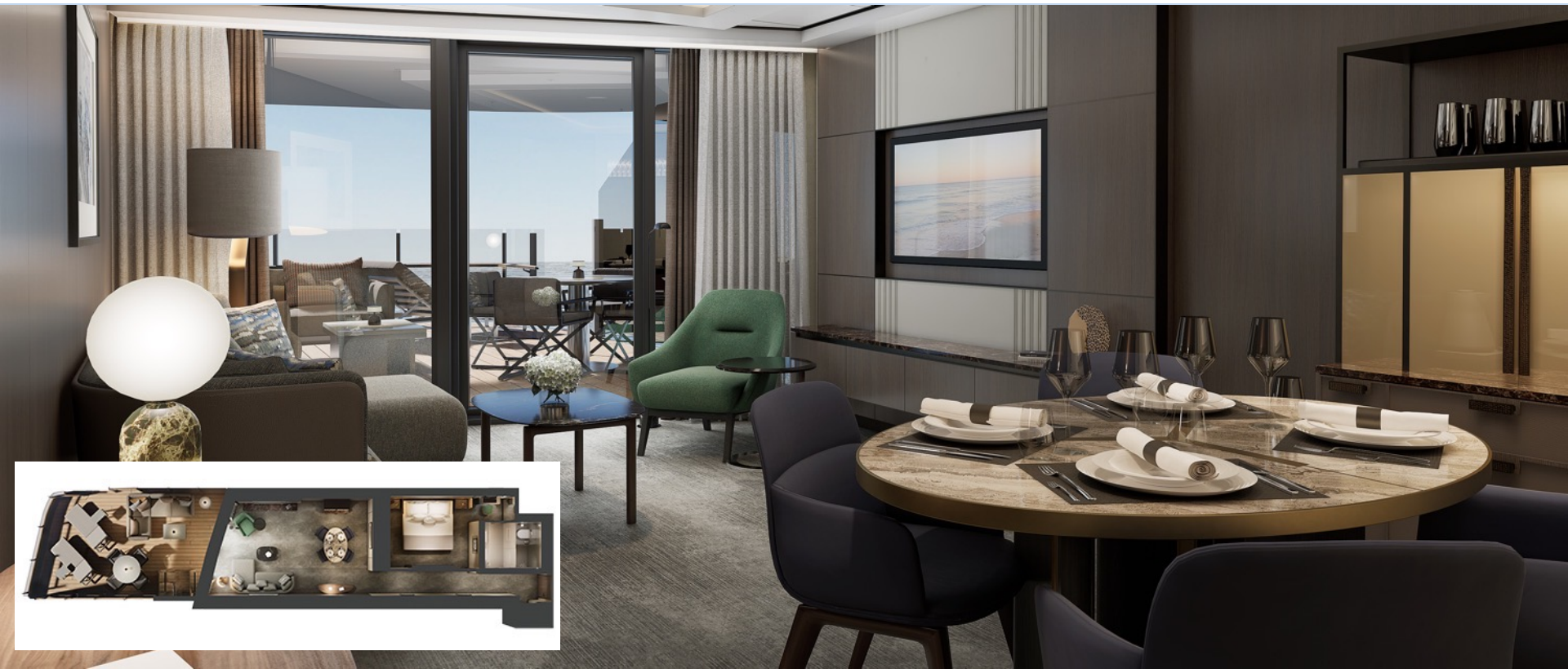
SUITE: 883 SQ FT | 82 SQ M  
TERRACE: 156 SQ FT | 14.5 SQ M  
QUANTITY: 2





# THE LUMINARA SUITE

SUITE: 506-657 SQ. FT | 47-61 SQ. M  
TERRACE: 291-301 SQ. FT | 27-28 SQ. M  
QUANTITY: 4



# THE VIEW SUITE

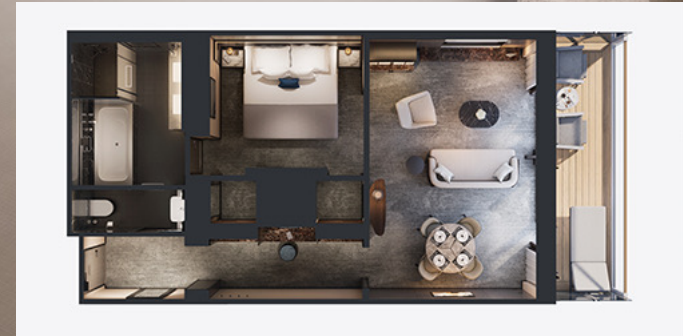
SUITE: 517-689 SQ FT | 48-64 SQ M  
TERRACE: 108-205 SQ FT | 10-19 SQ M  
QUANTITY: 2





# THE GRAND SUITE

SUITE: 560 SQ FT | 52 SQ M  
TERRACE: 90-199 SQ FT | 8.4-18.5 SQ M  
QUANTITY: 37





# THE SIGNATURE SUITE

SUITE: 409 SQ FT | 38 SQ M  
TERRACE: 71-151 SQ FT | 6.6-14 SQ M  
QUANTITY: 81



# THE TERRACE SUITE

SUITE: 294-452 SQ FT | 27.3-42 SQ M  
TERRACE: 52-161 SQ FT | 4.8-15 SQ M  
QUANTITY: 83 (+5 ADA)



# FLEET OVERVIEW

	<b>EV RIMA</b>	<b>ILMA</b>	<b>LUMINARA</b>
			
<b>TONNAGE</b>	25,400 GT	46,750 GT	46,750 GT
<b>LENGTH</b>	624 FT	790 FT	794 FT
<b>SUITES</b>	149	224	226
<b>GUESTS</b>	298	448	452
<b>CREW</b>	246	374	374
<b>LAUNCH</b>	OCT. 2022	SEP 2024	2025



# MILESTONES



March 22, 2023, the keel-laying ceremony was held for our second yacht, *Ilma*, at Chantiers de l'Atlantique in Saint-Nazaire, France.



June 6, 2023, the steel-cutting ceremony for our third yacht, *Luminara*, marked the official commencement of construction



September 26, 2025, we celebrated the successful float out of *Ilma* at the Chantiers de l'Atlantique shipyard in France.

# CONTACT US

[insidesales@ritz-carltonyachtcollection.com](mailto:insidesales@ritz-carltonyachtcollection.com)

TRAVEL PROFESSIONAL PORTAL:

[www.ritzcarltonyachtcollection.com/travelprofessionals](http://www.ritzcarltonyachtcollection.com/travelprofessionals)

- Manage bookings
- View availability
- Marketing resources
- And more!

US & Canada: (833) 753-9265

Outside the U.S & Canada: +1 (305) 907-7101

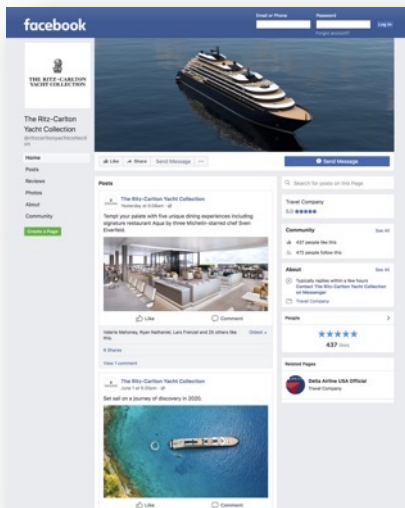
Europe, Asia & Africa: +356 2778 0081



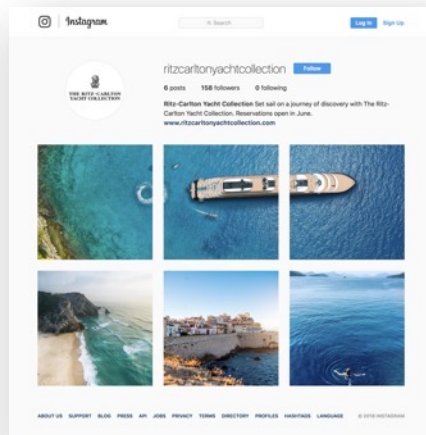
# FOLLOW US ON SOCIAL



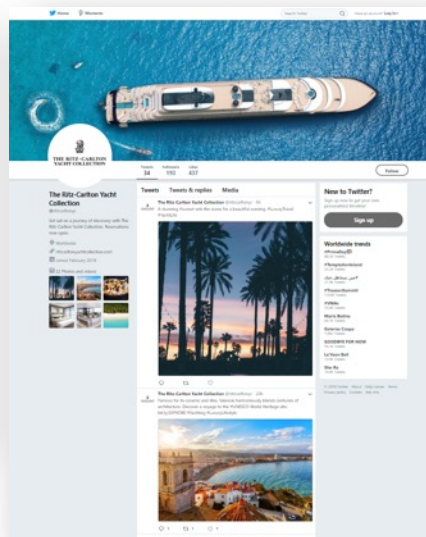
@ritzcarltonyachtcollection



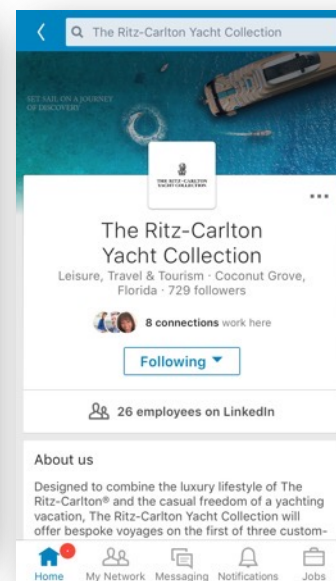
@ritzcarltonyachtcollection



@ritzcarltonyc



The Ritz-Carlton Yacht Collection







THANK YOU